

ZE		Moeller HPL0211-2007/2008		http://catalog.moeller.net		
Overload releases	Contact sequence	Auxiliary contacts		For use with	Short-circuit protection	
		N/O = Normally	N/C = Normally		Type "1" coordination	Type "2" coordination
I_r					gG/gL	gG/gL
A				A	A	A

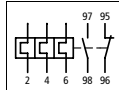
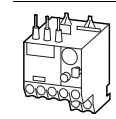
ZE overload relay for mini contactor

Phase failure sensitivity to IEC/EN 60947
For direct mounting



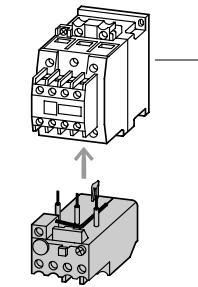
PTB 01 ATEX 3331

Overload release	Contact sequence	Auxiliary contacts	For use with	Short-circuit protection
0.1...0.16		1 N/O	DILEM DIULEM/21/MV SDAINLEM	20
0.16...0.24		1 N/C		0.5
0.24...0.4				1
0.4...0.6				2
0.6...1				2
1...1.6				4
1.6...2.4				6
2.4...4				6
4...6				10
6...9				



http://catalog.moeller.net		Moeller HPL0211-2007/2008		ZE	
Part no. Article no.	Price see price list	Std. pack	Notes		
ZE-0,16 014263		1 off	Overload release: tripping class 10 A Short-circuit protection: Observe the maximum permissible fuse of the contactor with direct device mounting. Ex Observe manual AWB2300-1425, German or English.		
ZE-0,24 014285					
ZE-0,4 014300					
ZE-0,6 014333					
ZE-1,0 014376					
ZE-1,6 014432					
ZE-2,4 014479					
ZE-4 014518					
ZE-6 014565					
ZE-9 014708					

When fitted directly to the contactor a clearance of at least 5 mm is required between the overload relays.



1 Contactor
Accessories
Manual

- page 5/3
- page 2/39
- page 6/18